

iHome | control



SMARTPLUG

Integration with your
Amazon Alexa Device

■ **Before you begin:**

NOTE: If you have completed Amazon integration via Wink, the following setup is not necessary. We recommend that you maintain your current setup.

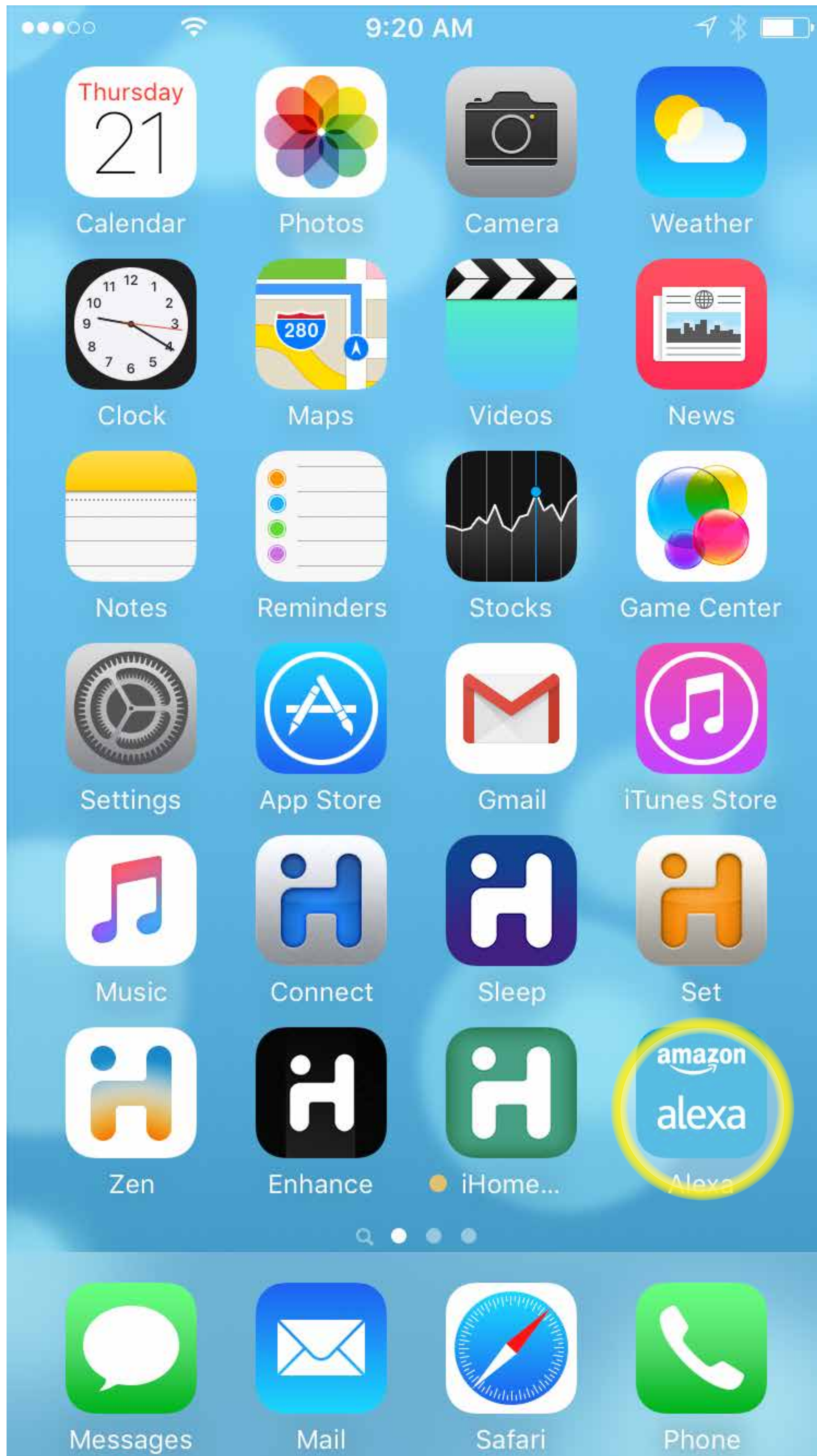
■ **Getting Started: Integration with Alexa Devices**

1. Make sure that you have already created an iHome account in your iHome Control app and that your SmartPlug(s) are connected to WiFi and operational.
2. Make sure that your Amazon Device (e.g. Echo, Dot, Tap) is set up and connected to Wi-Fi before proceeding with the next step.

ALEXA INTEGRATION

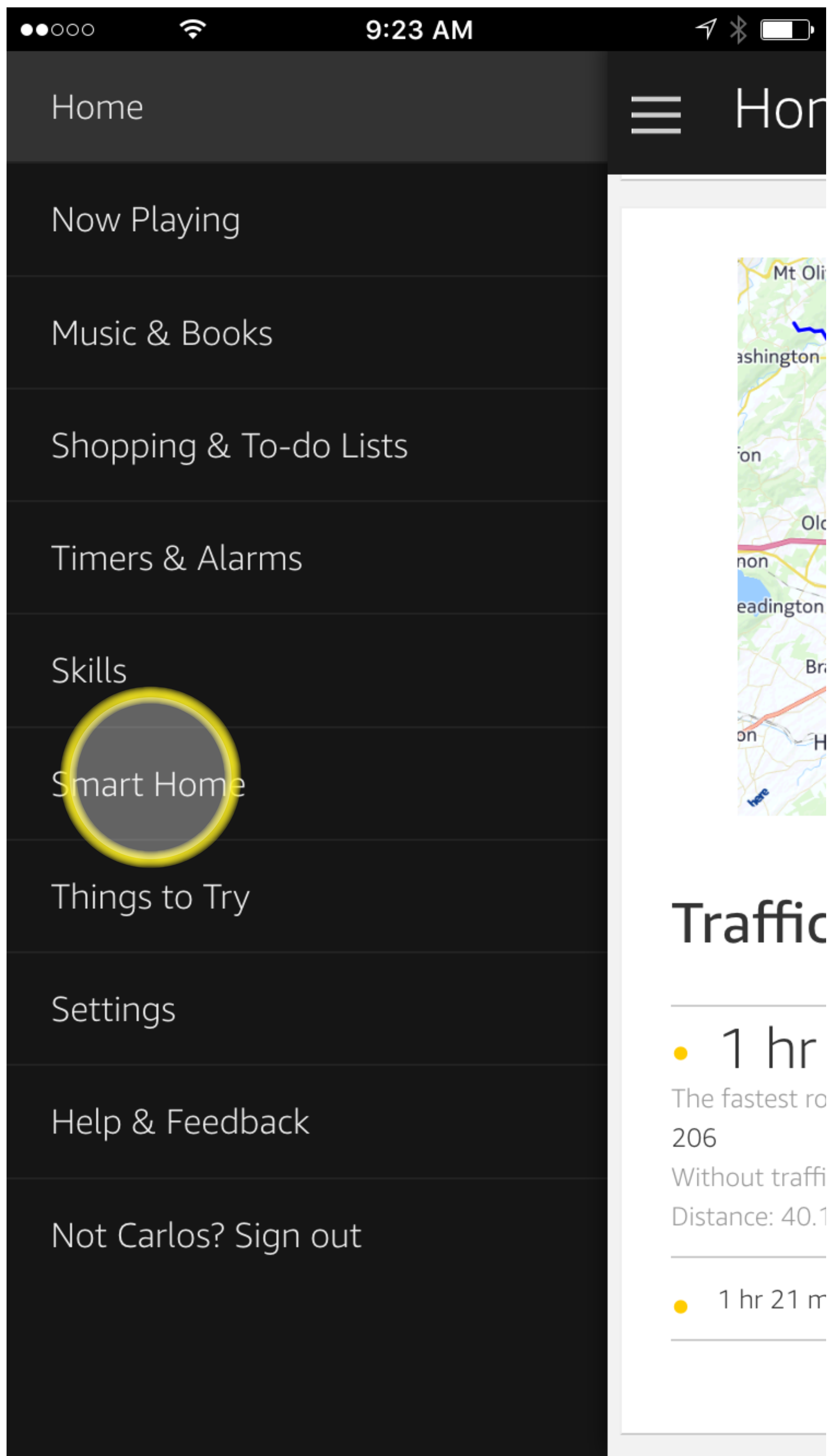
STEP 1

- Open the “Amazon Alexa” app



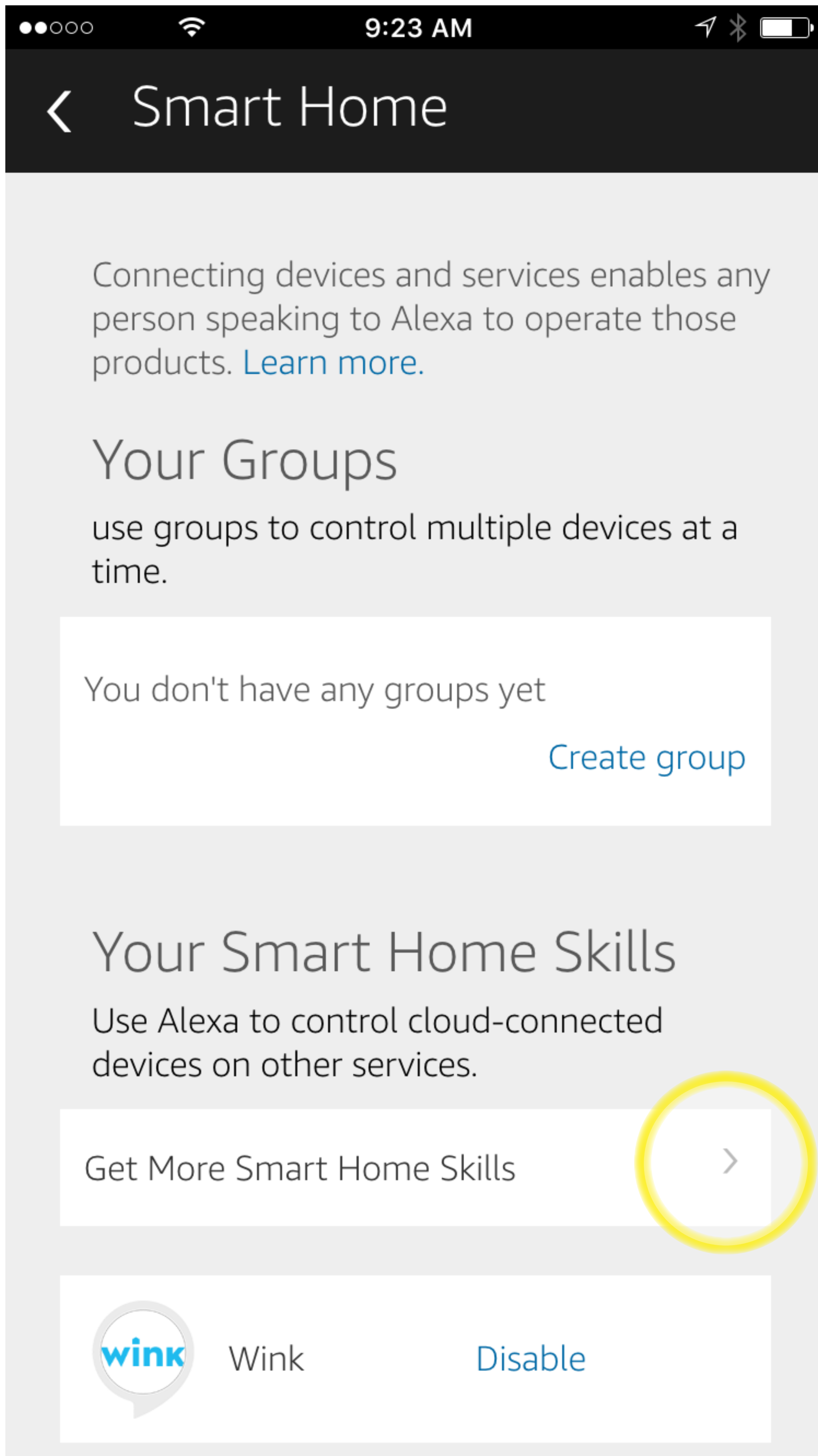
STEP 2

In the Alexa app go to settings, select “Smart Home”



STEP 3

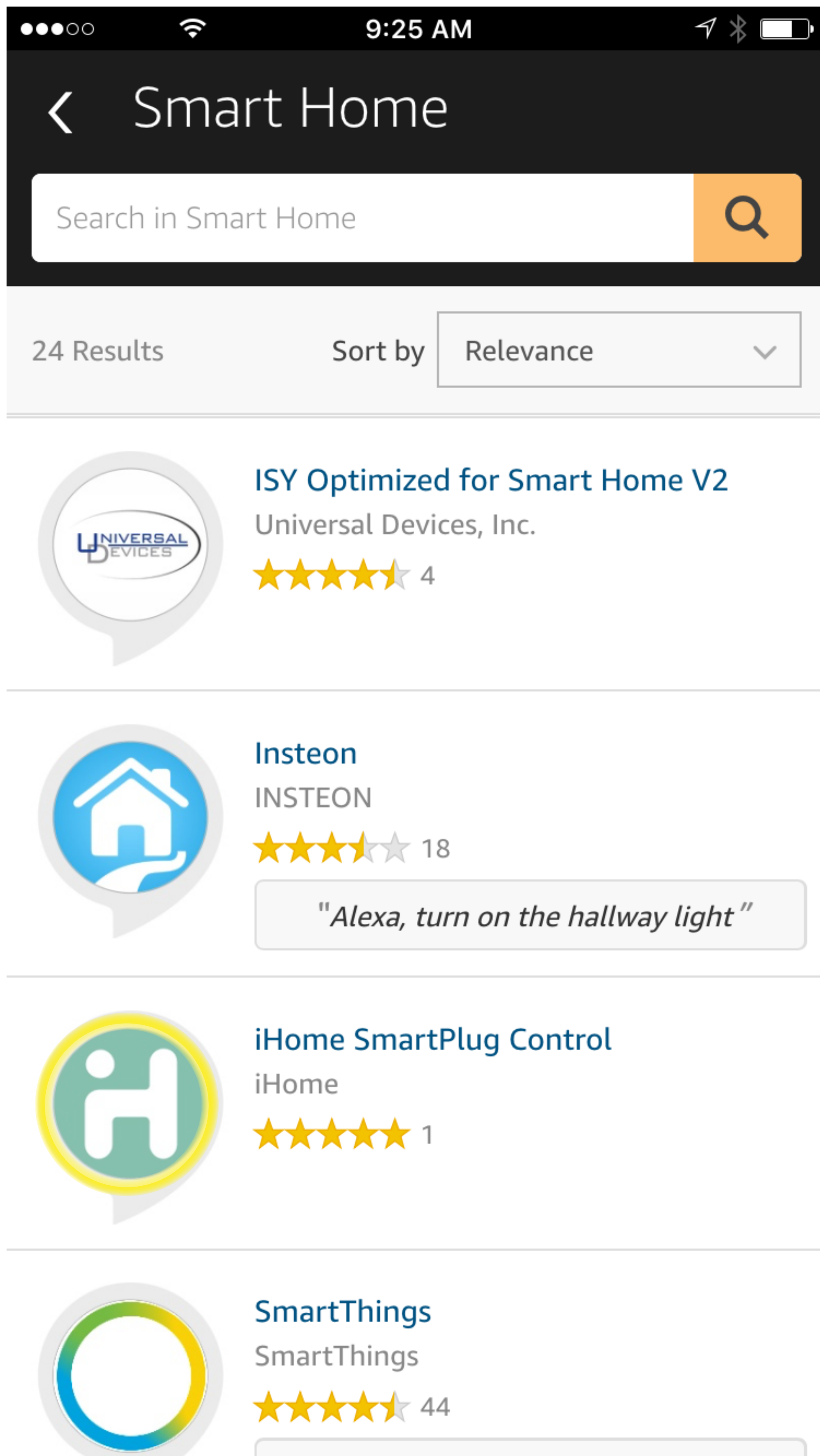
Select “Get More Smart Home Skills”



ALEXA INTEGRATION

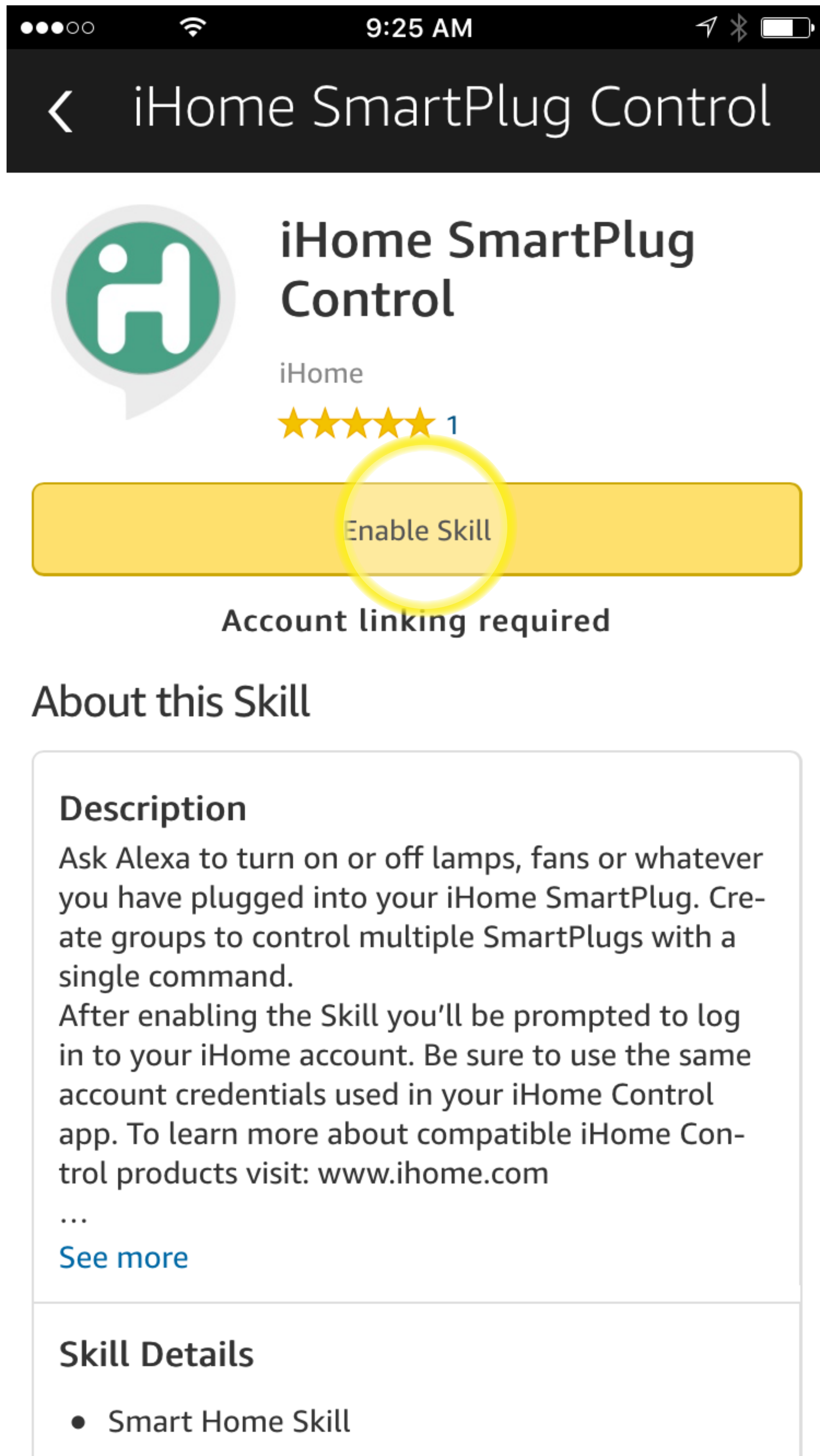
STEP 4

Search for “iHome” and select “iHome SmartPlug Control” from the search results



STEP 5

Select “Enable Skill”



ALEXA INTEGRATION

STEP 6

- Enter your iHome login credentials (same account used in iHome Control app)
- Select “Login”

Amazon Alexa

USERNAME

..... @gmail.com

PASSWORD

Forgot?

REMEMBER ME

Login

Done

1 2 3 4 5 6 7 8 9 0

- / : ; () \$ & @ "

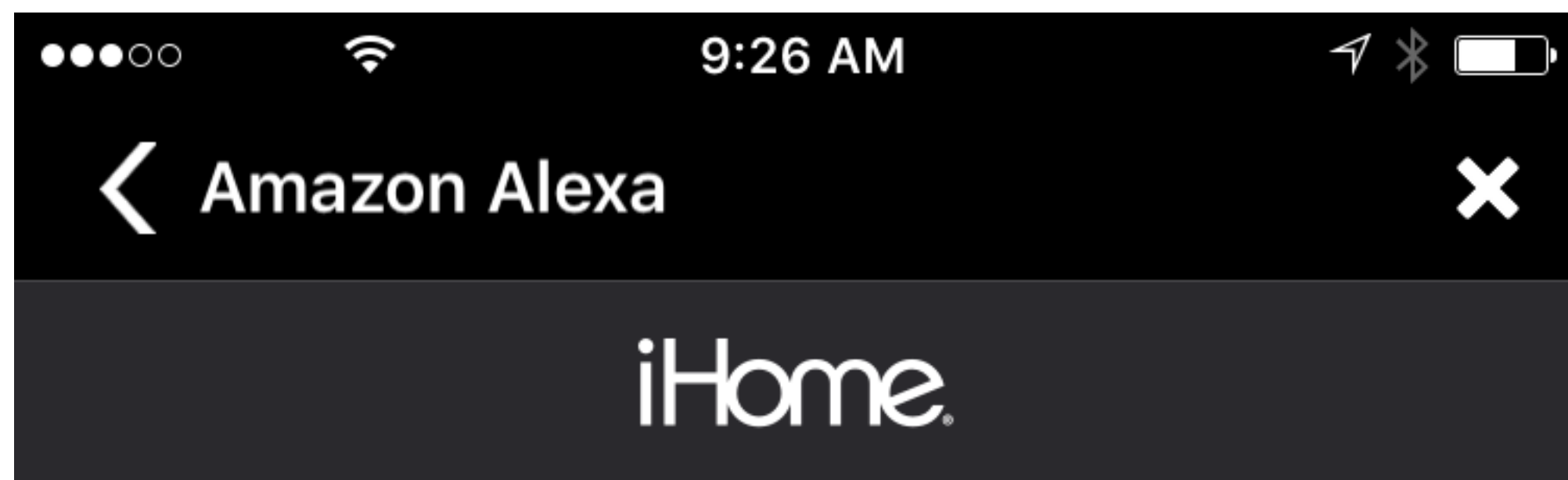
#+= . , ? ! ' < x

ABC space Go

ALEXA INTEGRATION

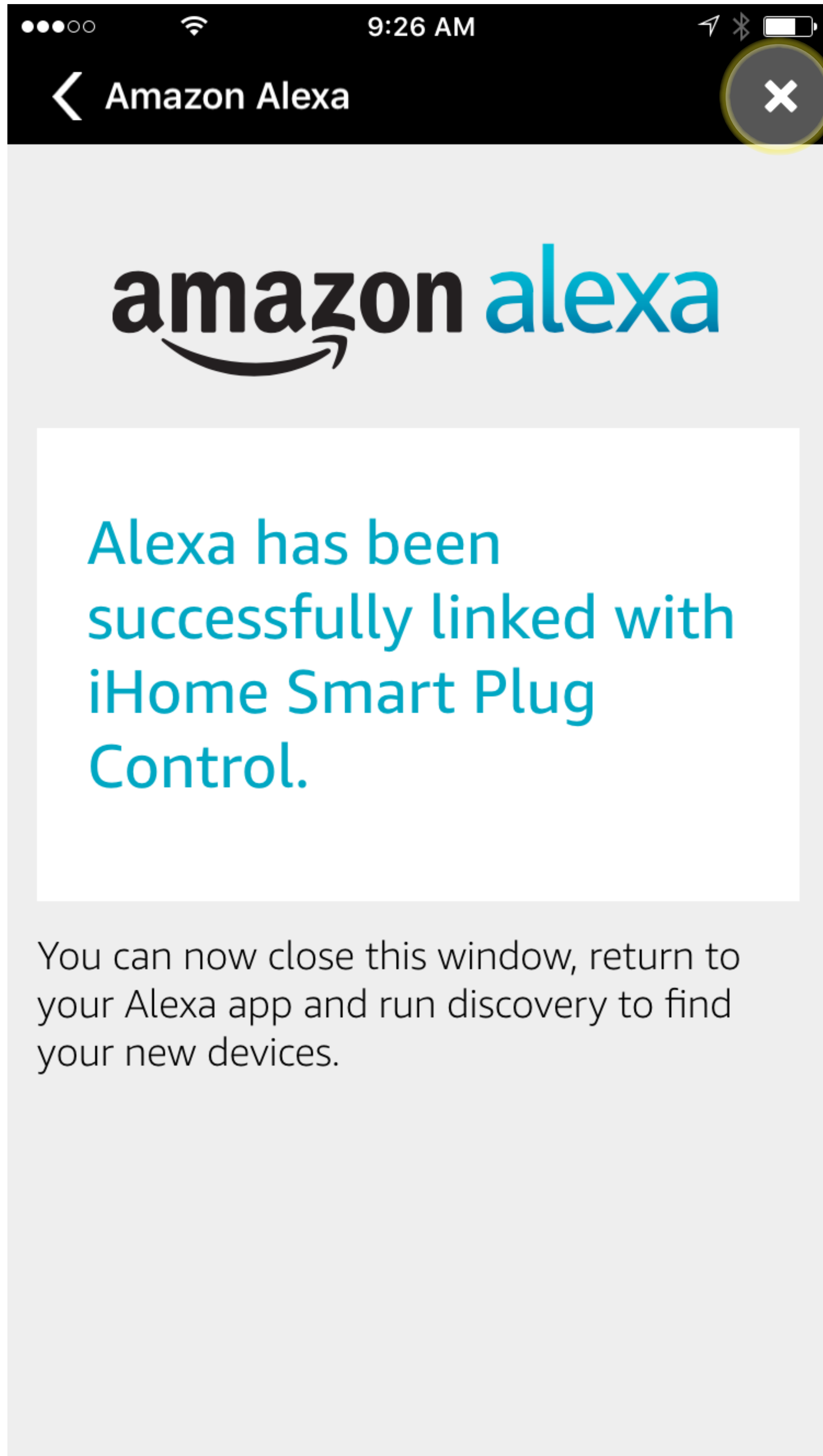
STEP 7

Select “Authorize”



Amazon Alexa would like to access your devices.





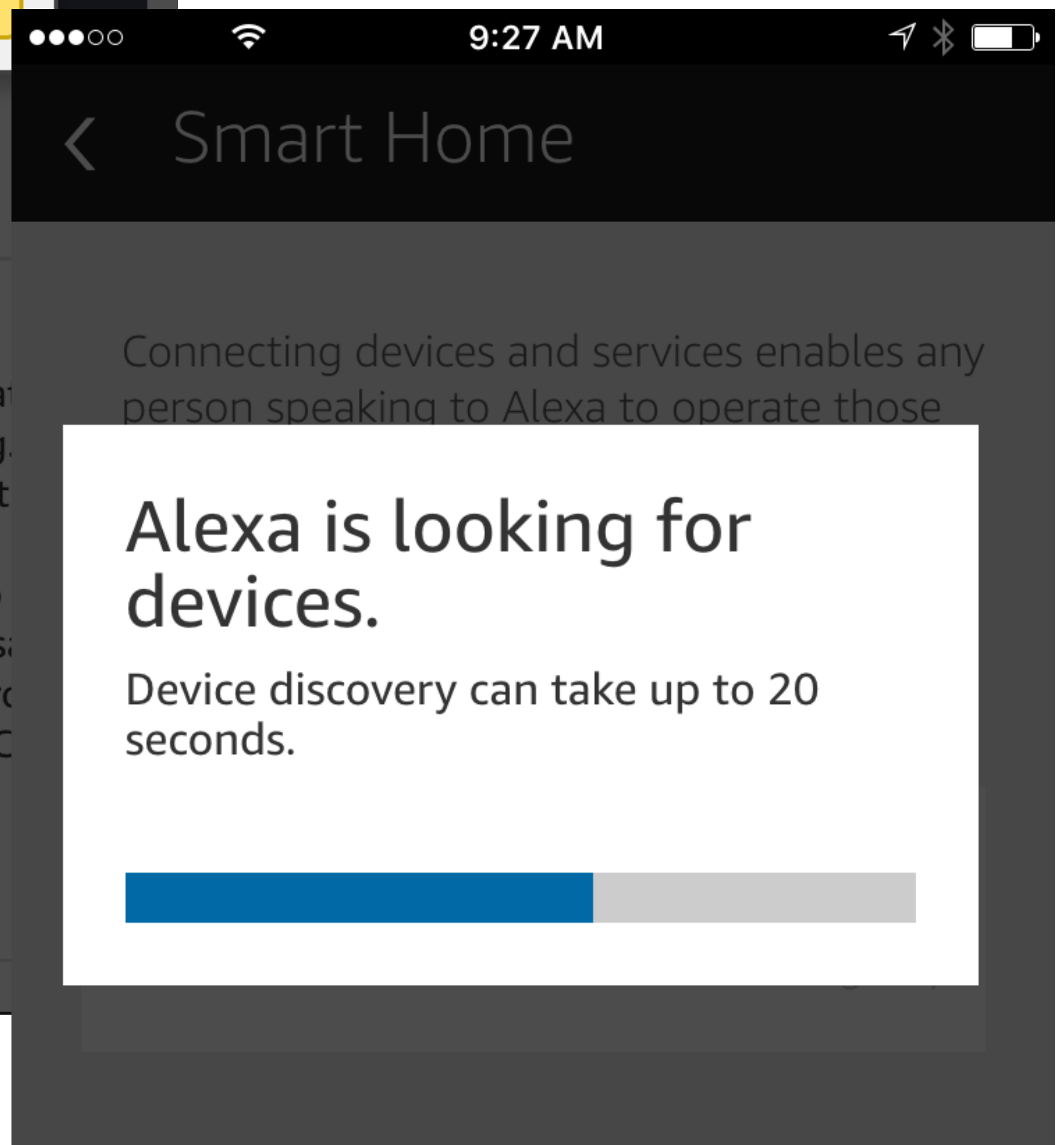
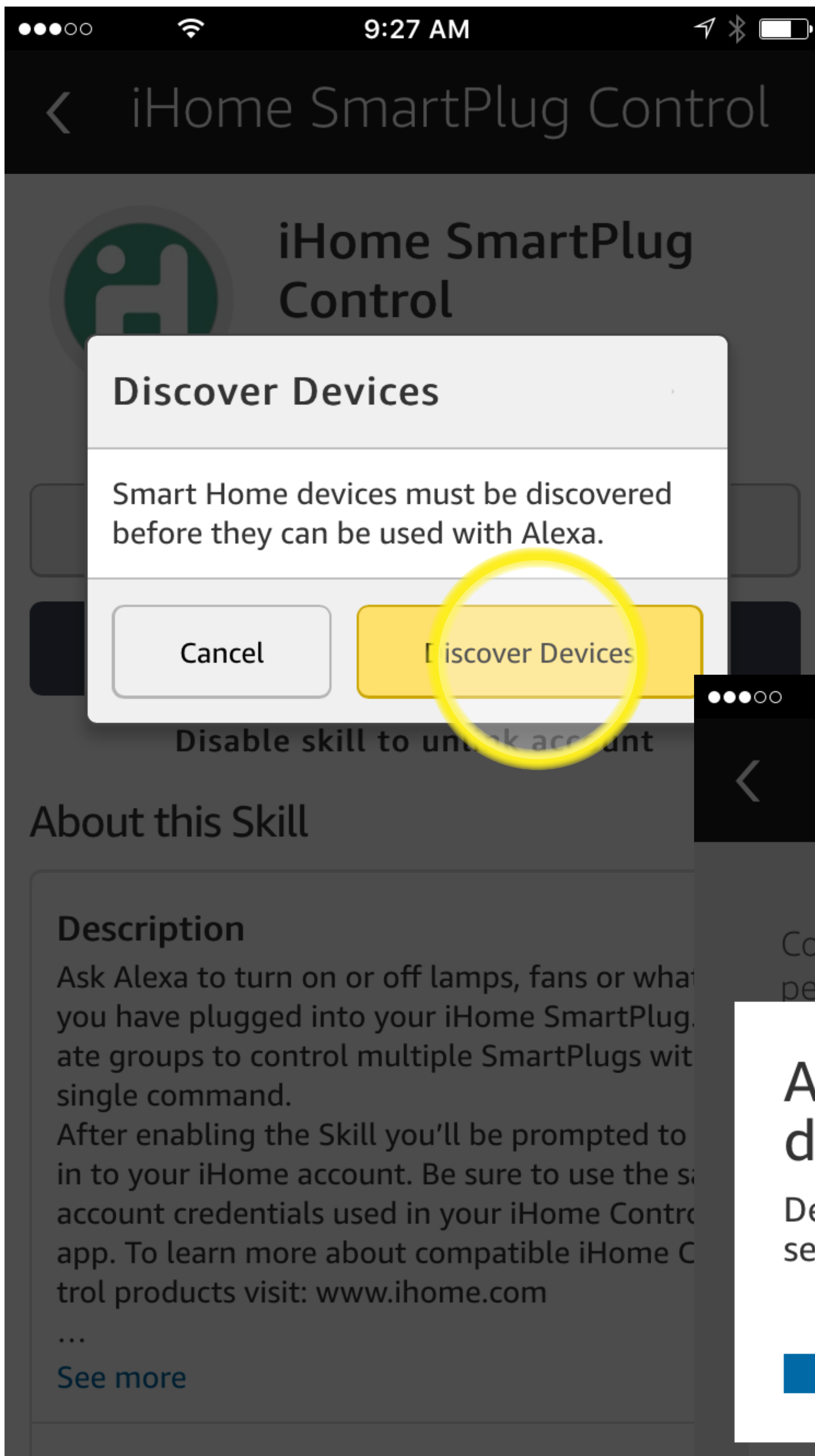
STEP 8

- You will see the message "Alexa has been successfully linked with iHome Smart Plug Control"
- Tap "X" to close this window.

ALEXA INTEGRATION

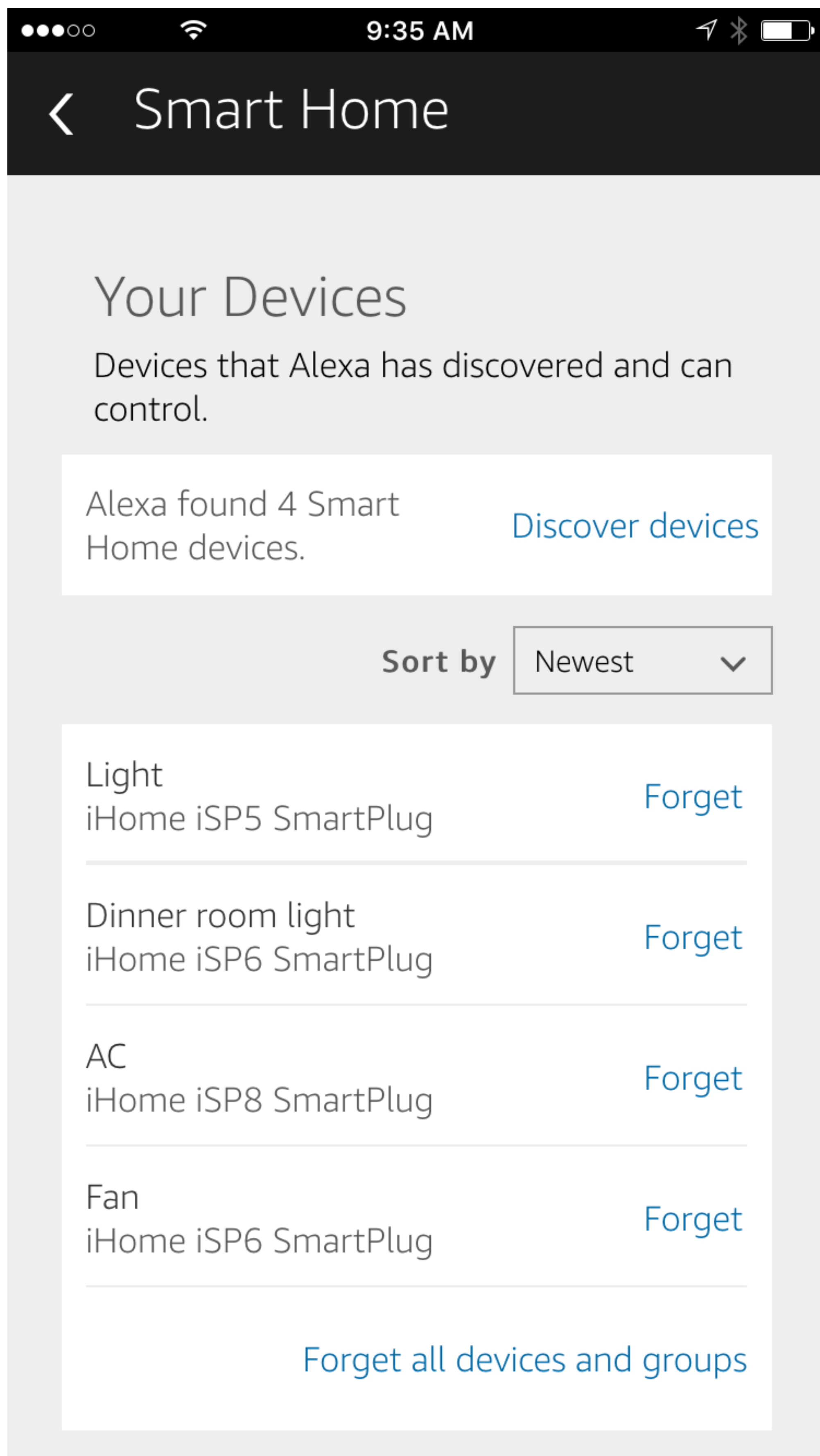
STEP 9

Select “Discover Devices”



STEP 10

- Scroll down to “Your Devices” to view a list of all your iHome SmartPlug devices.
- You should now be able to control your SmartPlug(s) by telling Alexa to turn your device name ON or OFF.



NOTE:

You can also group devices together and create a different group name that Alexa can control with a single voice command.

NOTE ON GROUPS:

If Alexa has difficulty understanding your device name(s), or if you want to control multiple devices with a single command we recommend setting up a new “Group” within your Alexa app. Groups can have a single device, or multiple, and you will be able to create a new name for the Group.