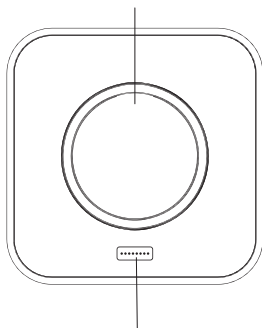


QUICK START GUIDE

In the Box » iAVS1 » USB charging cable » Universal voltage adapter » Amazon Echo Dot insert

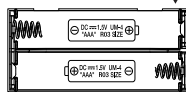
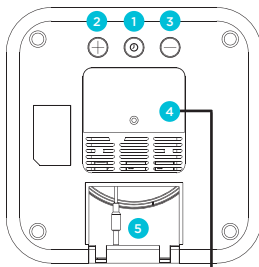
TOP

Amazon Echo Dot Dock



Display Dimmer Button

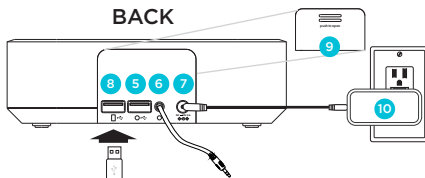
BOTTOM



8 USB Charge Device Port

Connect a standard USB cable (not included) to charge mobile devices.

BACK



9 Rear Cover

10 AC Adapter

1 Clock Setting Button

Press and hold to start clock setting. Adjust with +/- Buttons. Press again to complete clock setting.

NOTE: Alexa cannot set clock

2 +/- Setting Buttons

3 Press to adjust clock during setting (hold for rapid adjust)

4 Backup Battery Compartment

Unscrew door with Phillips screwdriver. Insert 2 AAA batteries (included) as shown to maintain clock setting during power interruption.

5 Dot USB Charge Port

6 Hardwired Aux cable

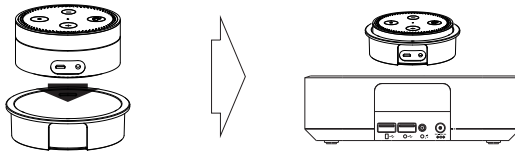
7 DC Jack

Connect the included AC adapter to the DC jack located on the back of the unit and connect the other end to a working wall

» TIP: Press the + and - Buttons on iAVS1 together during clock setting to switch display from standard 12 hour to 24 hour display.

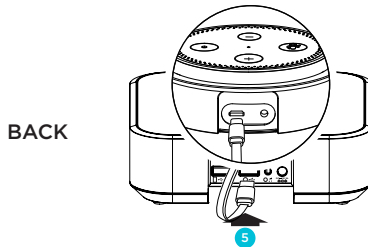
CONNECTING TO YOUR AMAZON ECHO DOT

Docking Your Amazon Echo Dot



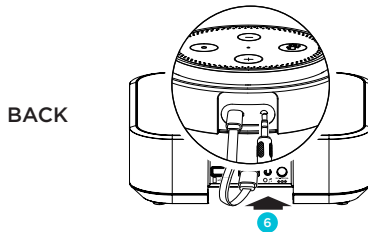
- » Align the rear of the Echo Dot (the side with the USB port and Aux Jack) with the opening in the included insert and place the two into the iAVS1 dock well with the ports facing the back.

Powering Amazon Echo Dot



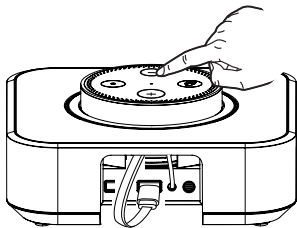
- » Connect the included USB charging cable to the Dot USB Charge Port **5**, then pass the other end of the cable through the slot and connect to the Echo Dot USB port.
- » Connect the AC power adapter **10** to the DC jack **7**.

Playing Amazon Echo Dot Audio



- » Connect the built-in Aux-in cable **6** on the back of the iAVS1 to the Aux jack of your Echo Dot.
- » You can now “Ask Alexa” to access all the functions of Echo Dot and hear the audio through the iAVS1.

VOLUME CONTROL



- » Use the volume control on the Amazon Echo Dot to adjust the volume to your desired level.
- » TIP: You can use Alexa voice commands to change volume or stop/pause playback.

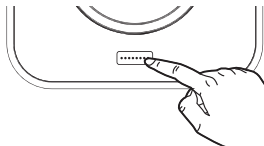
“Alexa, stop”

“Alexa, mute” or “Alexa, unmute”

“Alexa, set volume to 5”

“Alexa, turn up/down the volume”

USING THE DIMMER BUTTON



- » To dim the clock display, touch the **Dimmer Button** on top of the unit as needed to adjust the display brightness through 8 levels from High to Off.

FCC Information

Model: iAVS1

FCC Radiation Exposure Statement

The device has been evaluated to meet general RF exposure requirement.
The device can be used in portable exposure condition without restriction.

This device complies with Part 15 of the FCC Rules, operation is subject to the following two conditions: (1) This device may not cause harmful interference, and (2) this device must accept any interference received, including interference that may cause undesired operation.

- Warning: Changes or modifications to this unit not expressly approved by the party responsible for compliance could void the user's authority to operate the equipment.
- NOTE: This equipment has been tested and found to comply with the limits for a Class B digital device, pursuant to Part 15 of the FCC Rules.

These limits are designed to provide reasonable protection against harmful interference in a residential installation. This equipment generates, uses and can radiate radio frequency energy and, if not installed and used in accordance with the instructions, may cause harmful interference to radio communications.

However, there is no guarantee that interference will not occur in a particular installation. If this equipment does cause harmful interference to radio or television reception, which can be determined by turning the equipment off and on, the user is encouraged to try to correct the interference by one or more of the following measures:

- Reorient or relocate the receiving antenna.
- Increase the separation between the equipment and receiver.
- Connect the equipment into an outlet on a circuit different from that to which the receiver is connected.
- Consult the dealer or an experienced radio/TV technician for help.

CAN ICES-3 (B)/NMB-3(B)

Canada Statement

This device complies with Industry Canada's licence-exempt RSSs. Operation is subject to the following two conditions:

- (1) This device may not cause interference; and
- (2) This device must accept any interference, including interference that may cause undesired operation of the device.

Le présent appareil est conforme aux CNR d'Industrie Canada applicables aux appareils radio exempts de licence. L'exploitation est autorisée aux deux conditions suivantes :

- (1) l'appareil ne doit pas produire de brouillage;
- (2) l'utilisateur de l'appareil doit accepter tout brouillage radioélectrique subi, même si le brouillage est susceptible d'en compromettre le fonctionnement.

The device has been evaluated to meet general RF exposure requirement.

The device can be used in portable exposure condition without restriction.

le dispositif a été évalué à satisfaire l'exigence générale de l'exposition aux rf.

l'appareil peut être utilisé dans des conditions d'exposition portatif sans restriction.

WARNING/DISPOSAL OF UNIT

Do NOT attempt to change the battery. Doing so will void the warranty and could cause injury and damage to your device.

To dispose of the unit, follow the instructions below:

- Never dispose of used batteries/electronics with ordinary solid wastes, since they contain toxic substances.
- Always dispose of used batteries/electronics in accordance with the prevailing community regulations.
- Many electronics retailers now recycle batteries and other electronic components at no charge.

GENERAL BATTERY PRECAUTIONS

- Never use or charge a battery if it appears to be leaking, discolored, deformed, or in any way abnormal.
- Never disassemble the unit or attempt to remove battery as that could cause leakage of alkaline solution or other electrolytic substances.
- Avoid charging a rechargeable battery when the temperature is not within 5°C - 35°C (41° - 95° Fahrenheit).
- Never expose a battery to any liquid.
- Never expose a battery to excessive heat such as direct sunlight or fire. Never use a battery pack in an unventilated vehicle where excessive internal temperatures may be encountered.
- Always keep batteries out of the reach of infants and small children.