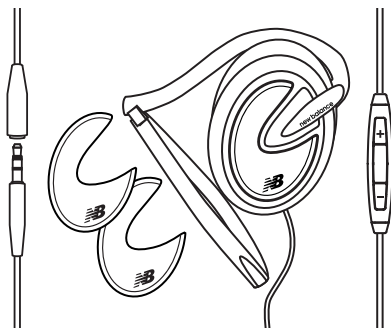




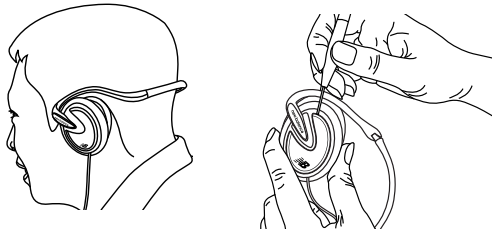
Model: NB464 Behind-The-Neck Sport Headphones



Using Your New Balance Sport Headphones with Foldable Neck Band

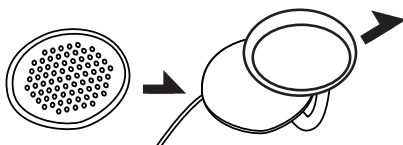
Your New Balance Headphones feature a foldable neckband for compact storage. Unfold the neckband completely and place it over your head and behind your neck as shown with the earpieces over your ears and the headphone plug on your left side.

Your New Balance Sport Headphones are supplied with two additional sets of plastic color caps to allow you to customize the look to match your mood. To replace the original caps simply lift up the edge of the cap as shown to remove it. Install a new cap and gently press down on the cap until it snaps into place.



Your New Balance Sport Headphones are also supplied with two sets of silicon speaker covers. You may wish to replace the original sponge speaker covers with the washable silicon speaker covers if you perspire heavily during exercise.

To replace the speaker covers, carefully lift the sponge covers off the speaker housing and then stretch the silicon covers over the housing.

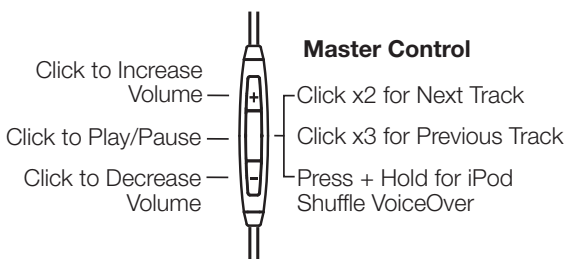


Your New Balance Sport Headphones were designed with a modular cord system. We have provided a 15" iPod/iPhone control cable that is suitable if your music player will be worn in an armband or clipped to your clothing at chest level. We have also provided a 36" cable that is suitable if your music player will be clipped to your belt, placed in your pocket or carried in a fanny-pack. You may connect both cables together in case you want to control your iPod or iPhone and the 15" or 36" cable is not long enough.

Connect the male headphone plug of the headphones to the female headphone jack of either the 15" or 36" headphone cable depending on your wearing preference. Then connect the male headphone plug of the 15" or 36" cable to the headphone jack of your music player. Be sure that the plugs are fully inserted into the jacks. If the plugs are not fully inserted you may only hear sound from one earpiece.

Using the iPod/iPhone Control Cable

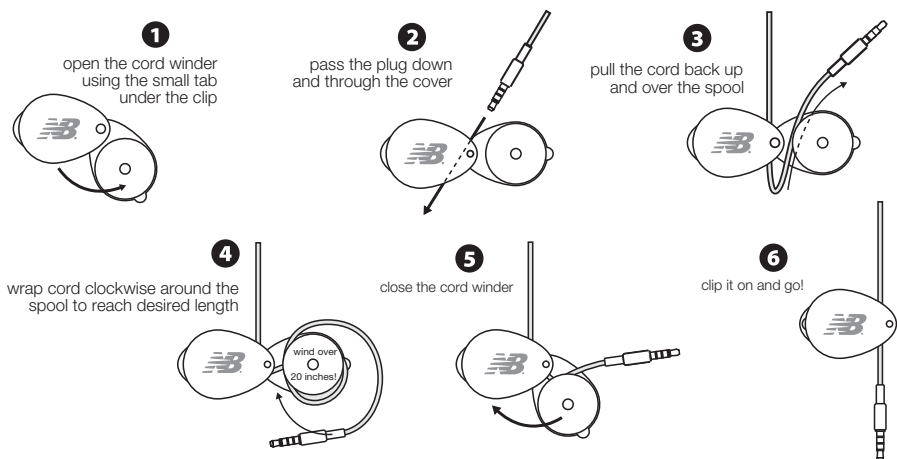
Connect the 15" iPod/iPhone cable between your headphones and your iPod/iPhone to perform the following operations with the remote controller mounted on the cable:



To Do This	Action Required
Activate voice control* Answer or end a call	Depress the Master Control for 2 seconds Press the Master Control once to answer call Press the Master Control again to end call
Ignore an incoming call	Depress the Master Control for 2 seconds
Answer a second incoming call and place original call on hold	Press the Master Control once to answer second call Press the Master Control again to return to first call
Answer a second incoming call, and end original call	Depress the Master Control for 2 seconds 2 low tones will confirm end of original call.
Switch between two calls	Press the Master Control once to switch between calls
Play or Pause	Press Master Control once to Play, again to Pause
Skip Track or Chapter Forward	Press Master Control 2 times quickly
Skip Track or Chapter Back	Press Master Control 3 times quickly
Increase Volume Decrease Volume	Press the "+" button Press the "-" button
Activate VoiceOver**	Press and hold the Master Control to hear title and artist of currently playing song
Navigate Playlists using VoiceOver**	Press and hold the Master Control until tone is heard, then release. When the name of the desired playlist is heard, press the Master Control once to select it.

Using the Accessory Cord Winder Clip

Your New Balance Ear Buds are also supplied with a cord winder clip that may be used to eliminate excess slack in the 36" cable if necessary. If you find that that the 36" cable is too long you can store up to 24" of cable in the cord winder and then clip the cord winder to your clothing.



Using the Water Resistant Connection Cover

Your New Balance Ear Buds are also supplied with a silicon sleeve that can be used to cover the connection between the male headphone plug on the Ear Buds and the female headphone jack on the 15" or 36" cable. Use this connection cover if you routinely use your Ear Buds in extremely wet or damp conditions.

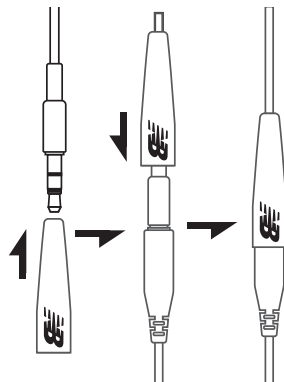
Stretch the connection cover over the plug of the Ear Buds as shown. After connecting the male plug of the Ear Buds to the female jack on the 15" or 36" cable. Slide the connection cover down so that it completely covers the plug and jack connection point to seal out excess moisture.

Safety Information

To protect your hearing, always start listening with the Volume Control of your music player set to a low level and gradually increase the volume to a comfortable listening level.

IMPORTANT! Listening at high volume for long periods of time can result in long-term hearing damage. For your safety, do not use headphones if they would prevent you from hearing warning sounds, such as while driving a car or motorcycle, riding a bike, etc.

NOTE: In extremely cold or dry air conditions you may notice a slight "tingling" feeling in your ears when using in-ear headphones. This is the result of the build-up of static electricity in your body. This is normal and not an indication of any problem with your headphones.



Limited 2 Year Warranty

New Balance Products, a division of SDI Technologies Inc. (hereafter referred to as SDI Technologies), warrants this product to be free from defects in workmanship and materials, under normal use and conditions, for a period of 2 years from the date of original purchase.

Should this product fail to function in a satisfactory manner, it is best to first return it to the store where it was originally purchased. Should this fail to resolve the matter and service still be required by reason of any defect or malfunction during the warranty period, SDI Technologies will repair or, at its discretion, replace this product without charge (except for a \$2.00 charge for handling, packing, return UPS/postage, and insurance). This decision is subject to verification of the defect or malfunction upon delivery of this product to the Factory Service Center listed below. The product must include proof of purchase, including date of purchase. The fee for service without proof of purchase is \$4.00.

Before returning this product for service, please first replace the batteries (if applicable) with fresh ones, as exhausted or defective batteries are the most common cause of problems encountered.

If service is still required:

1. Remove the batteries (if applicable) and pack the unit in a well padded, heavy corrugated box.
2. Enclose a photocopy of your sales receipt, credit card statement, or other proof of the date of purchase, if within the warranty period.
3. Enclose a check or money order payable to the order of SDI Technologies, for the sum of \$2.00 (\$4.00 without proof of purchase).
4. Send the unit prepaid and insured, to the Factory Service Center listed below.

Consumer Repair Department

SDI Technologies Inc. 1330 Goodyear Drive
El Paso, TX 79936-6420

Disclaimer of Warranty

NOTE: This warranty is valid only if the product is used for the purpose for which it was designed. It does not cover (i) products which have been damaged by negligence or willful actions, misuse or accident, or which have been modified or repaired by unauthorized persons; (ii) cracked or broken cabinets, or units damaged by excessive heat; (iii) damage to digital media players, CD's or tape cassettes (if applicable); (iv) the cost of shipping this product to the Factory Service Center and its return to the owner.

This warranty is valid only in the United States of America and does not extend to owners of the product other than to the original purchaser. In no event will SDI Technologies or any of its affiliates, contractors, resellers, their officers, directors, shareholders, members or agents be liable to you or any third party for any consequential or incidental damages, any lost profits, actual, exemplary or punitive damages. (Some states do not allow limitations on implied warranties or exclusion of consequential damages, so these restrictions may not apply to you.) This warranty gives you specific legal rights, and you may also have other rights which vary from state to state.

Your acknowledgement and agreement to fully and completely abide by the above mentioned disclaimer of warranty is contractually binding to you upon your transfer of currency (money order, cashier's check, or credit card) for purchase of your SDI Technologies product.

© 2010 SDI Technologies, Inc. All rights reserved

**Questions? Visit www.newbalanceaudio.com or
call 1-800-288-2792 Toll Free.**

Authorized Licensee of New Balance Athletic Shoe, Inc. New Balance and Flying NB are registered trademarks of New Balance Athletic Shoe, Inc