

iHome®

Model iP90
The Home System
For Your iPhone® or iPod®

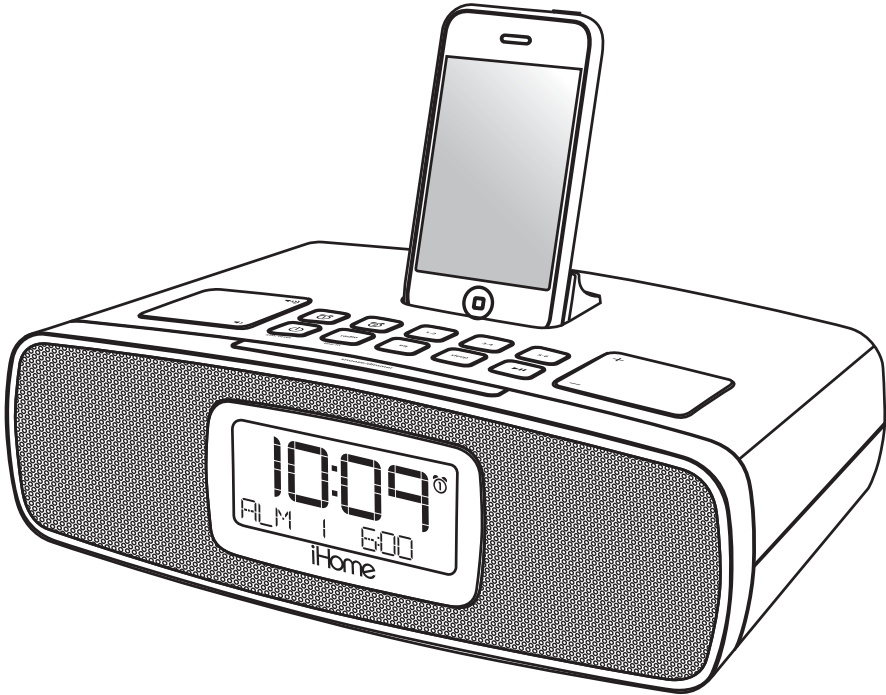


Table of Contents

Quick Start	1
Controls and Indicators.....	2
iP90 Display	3
Setting Up the iP90.....	3
Using the iP90.....	5
Replacing iP90 Backup Batteries / Battery Warning	6
A Consumer Guide to Product Safety	7
Troubleshooting.....	8



This product bears the selective sorting symbol for waste electrical and electronic equipment (WEEE).



This means that this product must be handled pursuant to European Directive 2002/96/EC in order to be recycled or dismantled to minimize its impact on the environment.



For further information, please contact your local or regional authorities.

Electronic products not included in the selective sorting process are potentially dangerous for the environment and human health due to the presence of hazardous substances.

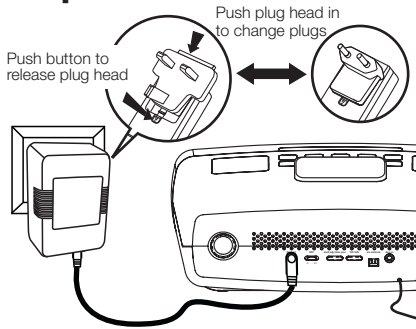
Maintenance

Maintenance

- Place the unit on a level surface away from sources of direct sunlight or excessive heat.
- Protect your furniture when placing your unit on a natural wood and lacquered finish. A cloth or other protective material should be placed between it and the furniture.
- Clean your unit with a soft cloth moistened only with mild soap and water. Stronger cleaning agents, such as Benzene, thinner or similar materials can damage the surface of the unit.

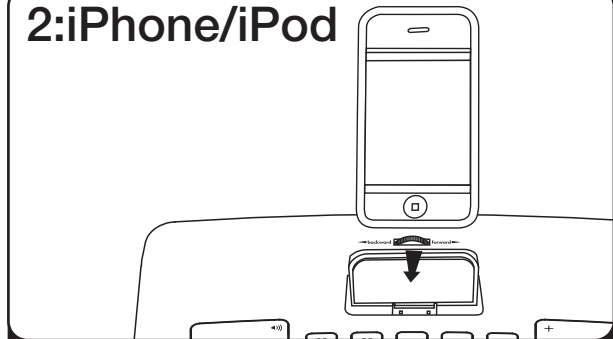
quick start

1: power



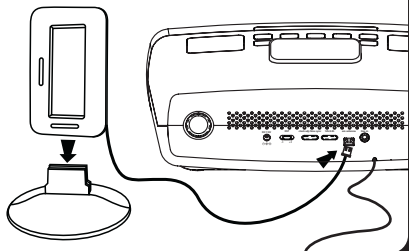
Attach AC adaptor cable to DC jack on back of the iP90 and plug the other end into a wall socket.

2:iPhone/iPod



Gently insert your iPhone or iPod into the dock (iPhone/iPod must not be in a skin or case). Turn the dock adjustment knob until the iPhone/iPod is held firmly in place (do not overtighten). The iPhone/iPod will charge while docked. Press the **▶||** Button on the iP90 to play your iPhone/iPod.

3: antennas



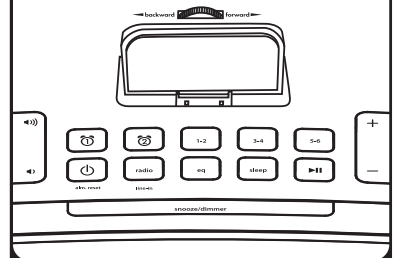
Snap AM antenna into provided stand, then plug antenna cable into socket on back of iP90. Move antenna 12" away. Extend FM antenna.

4: time



- Press & hold the 12h/24h button to switch between 12 and 24 hour time display
- Press & hold the Clock Adj Button on back until the display flashes
- Press the + or - button to set the time. Press Clock Adj again.
- Press the + or - button to set the year. Press Clock Adj again.
- Press + or - button to adjust the date. Press Clock Adj again to complete clock setting.

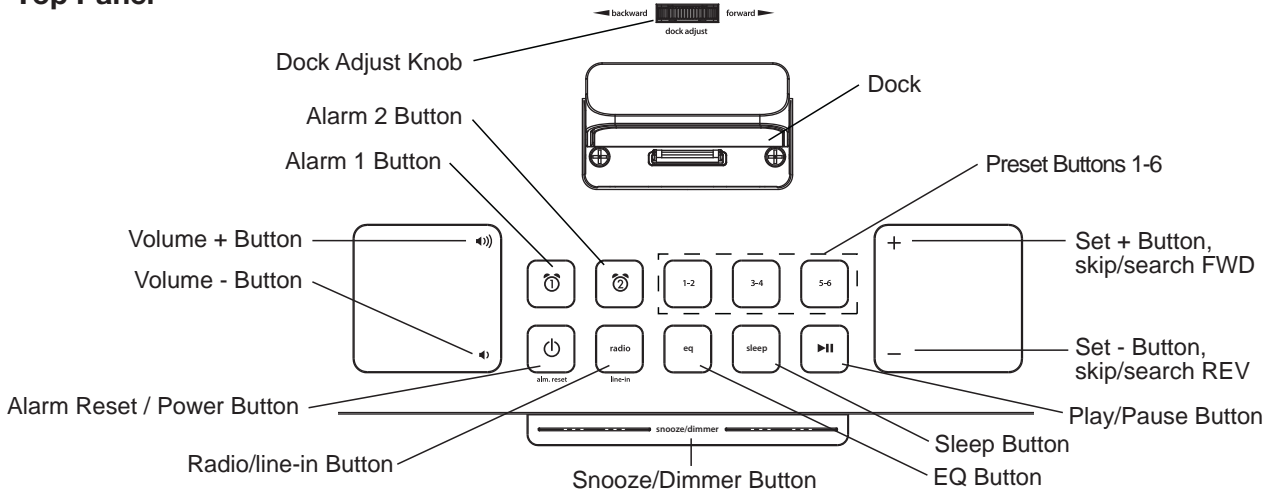
5: radio



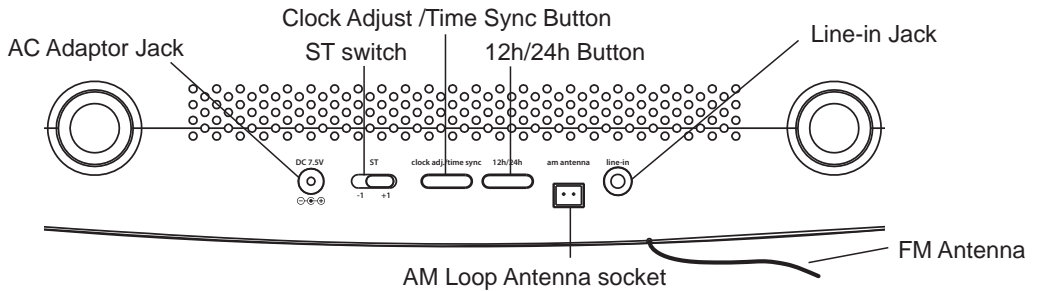
Press the Radio button and press again to select AM/FM band. Press the + or - button to tune in a station. See page 4 for programming presets.

Controls and Indicators

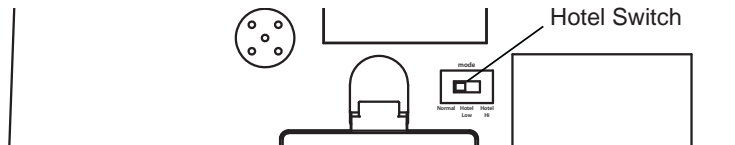
Top Panel



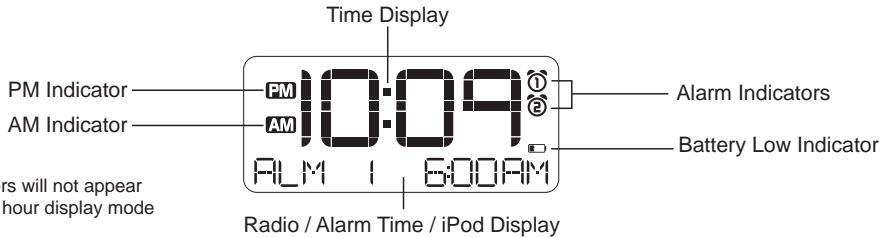
Rear Panel



Bottom Panel



iP90 Display



NOTE: AM/PM indicators will not appear when clock is set to 24 hour display mode

Setting Up the iP90

Connect iP90 to Power Source

Plug the AC adaptor cable into the **AC Adaptor Jack** and the other end into a standard 100-240 VAC wall socket. Adaptor must be plugged in to operate. **The iP90 does not operate on batteries.**

Using the Hotel Switch

The iP90 has a 3 position switch on the bottom of the unit. For regular home use, keep the switch in Normal position. Hotel Low lowers the output of the unit and Hotel High maintains regular output. While in either Hotel mode:

- Clock adjust and 12h/24h buttons are disabled
- Radio presets can be accessed, but not programmed
- Alarms operate as single day alarms (will not automatically come on the next day even if Alarm Reset is pressed), 7-5-2 operation is disabled, and wake to playlist is disabled
- The remote control sensor is disabled

Setting the Clock Time

Time Display Options

- Press and hold the 12H/24H Button at any time to toggle between displaying the time in 12 hour (AM and PM) mode or 24 hour mode

Setting the Clock

- Slide the **ST switch** to adjust for Summer Time (+1 for Summer time, -1 for Standard time).
- Press and hold the **Clock Adjust Button** located on the back of the unit. The clock display will flash.
- Press the **+ or - Button** until the current time is displayed.
- Press the **Clock Adjust Button** to accept the time. The year display will flash.
- Press the **+ or - Button** to adjust the year and press the **Clock Adjust Button**. The date display will flash.
- Press the **+ or - Button** to adjust the date and press the **Clock Adjust Button**. Two beeps will indicate clock setting is complete.

Setting Time Using iPhone/iPod Time Sync

The iP90 Time Sync feature allows you to sync the time setting on the iP90 to the time from your iPhone or recent model iPod (iPod touch, iPod nano and iPod Classic; older iPod models such as iPod mini do not support this feature).

1. Press the **Clock Adjust/Time Sync Button** located at the back of the unit, "Time Sync" flashes on the lower part of the display.
2. Once sync is completed, "Time Updated" will appear on the display.
3. If sync was not successful, "Sync Failed" will appear on the display. If this happens, please try again, with a different iPhone/iPod if needed. If sync still fails, please set time manually (see below).

NOTE: iPhone time is automatically updated to the correct time via cell phone towers. The time on your iPod is accurate only to the time on the computer the last time the iPod was synced to it. It's possible to have up to 59 seconds difference between the iP90 and synced iPhone/iPod.

Setting Time and Calendar manually

1. Press and hold the **Clock Adjust/Time Sync Button** located at the back of the unit until the time flashes on the display.
2. Press the **+** or **- Button** to the correct time. Remember to set the correct AM or PM time. The **AM/PM Indicators** appear to the left of the time display.
3. Press the **Clock Adjust/Time Sync Button** again. The year will flash. Press the **+** or **- Button** until the current year is displayed.
4. Press the **Clock Adjust Button** again. The month and date will flash. Press the **+** or **- Button** until the current month/date is displayed.
5. Press the **Clock Adjust/Time Sync Button** again (or no button within 10 seconds) to exit the time/calendar setting mode.

Using the Alarms

iP90 has a dual alarm system so you can set two separate alarms to different alarm times, wake-to sources and frequencies (daily, weekdays or weekend).

Setting the Alarms

1. Press and hold the **1** or **2 Button** until the alarm time flashes on the lower part of the display. Press the **+** or **- Button** to set the alarm time. Remember to set the correct AM or PM time.
2. Press the **Alarm Button** again to confirm the desired alarm time and then press the **+** or **- Button** to set the alarm frequency (7 = the whole week, 5 = weekdays, 2 = weekends only).
3. Press the **Alarm Button** again and then press the **+** or **- Button** to select an alarm source to wake to: iPod (includes iPhone), Radio, Buzzer or Playlist. **Note:** to wake to playlist, you must create a playlist named "iHome". The iP90 will play music randomly from within the "iHome" playlist.
4. **For wake to radio:** after selecting Radio as wake to source, press the **Alarm Button** and then press the **+** or **- Button** to select AM or FM band. Press the **Alarm Button** again and press the **+** or **- Button** to select a radio station or press one of the preset buttons to wake to a preset radio station (see *Using Radio* on page 4 for details on setting radio stations and presets).
5. Press the **Alarm button** again (or no button within 10 seconds) to exit the alarm setting mode. The alarm will be armed once set and the corresponding alarm icon will light up. The lower part of the display will show the earliest set alarm time.
6. If wake to source is set to iPod but no iPhone/iPod is docked at the set alarm time, the iP90 will default to buzzer alarm.

Using the iP90

Reviewing, Arming and Disarming Alarm (Turn Alarm Function On and Off)

1. Once an alarm is armed, the lower part of the display will show the alarm time. If more than one alarm is armed, the earliest alarm time will show.
2. To review the alarm time, press an alarm button once. The related alarm time will show on the lower part of the display.
3. During alarm review, press the alarm button once to toggle it on or off. If the alarm is armed, the related alarm icon will light up.

Resetting the Alarm to Come on the Next Day

1. When the alarm is sounding, press the **⏸ Button** to stop alarm and reset it to come on the next set day. For example, if alarm is set for 5 days and you press the alarm reset on Friday, the alarm will come on again on Monday, not Saturday.

Snooze Operation

1. Press and hold the **Snooze/Dimmer Button** for a few seconds until the snooze time flashes. Press the **+ or - Button** to set the snooze timer from 1 to 29 minutes.
2. Press the **Snooze/Dimmer Button** after an alarm sounds. The alarm will be silenced for the set snooze duration time then sound again. Snooze can be pressed several times during the 1 hour alarm cycle.

Sure Alarm

The iP90 has a sure alarm feature. If backup batteries are installed, the buzzer alarm will still sound in the event of a power failure.

Charging your iPhone/iPod

Note: Please make sure you are using the correct insert for your iPhone/iPod and that it is properly docked into the iP90. Failure to do so may damage your iPhone/iPod.

1. While an iPhone/iPod is docked in the unit and the unit is connected to AC power, it recharges (until fully charged).

Listening to iPhone/iPod

1. Dock the already playing iPhone/iPod in Dock. The iP90 will automatically turn on and you will hear the music playing from your iPhone/iPod.
Note: If the playing song/music loudness is too low on the iPod itself, the iP90 may not detect iPod is in play mode. Press the **▶|| Button** to play it.
2. When an iPhone/iPod is docked and in standby mode, press the **▶|| Button** to play it. The lower part of the display will show "iPod" of iPod playing mode.
4. Press the **▶|| Button** again to pause play; press again to resume it.
5. Press the **+ or - Button** to skip to the next or previous track on your iPhone/iPod. Press and hold the **+ or - Button** to search within a track.
6. Press the **⏪) or ⏩) Button** to adjust the system volume.
7. Press the **EQ Button** to select and press the **+ or - Button** to set Treble, Bass, 3D Sound on/off and Left/Right Balance.
8. To turn off the unit, press the **⏸ Button**. An iPhone/iPod will continue charging while docked.

Listening to Radio

Setting up Antenna

Extend FM wire antenna fully for best reception. Do not strip, alter or attach to other antennas.

For USA user, snap AM antenna cable into **AM Loop Antenna Socket** on back of unit. Move antenna 12" away from unit for best reception.

Tuning and Playing the Radio

1. Press the **Radio Button** as needed to turn on iP90 and cycle through FM radio, AM radio and Line-in modes.
2. When the desired FM or AM mode is selected, press the **+ or - Button** to tune the radio to a desired station. The current radio frequency appears in the lower right of the display. Press and hold the **+ or - Button** to scan for the next clear station.
3. **To memorize a station as a preset**, use the **+ or - Buttons** to tune to the first station you wish to memorize. When the desired station appears in the display, press and hold the **Preset 1-2 button** until PRE 1 begins flashing in the display. Press again to alternately switch between Preset 1 and Preset 2 if desired, then release the button. After 5 seconds the PRE 1 or PRE 2 indicator disappears and your station is saved in Preset Memory 1 or 2. Repeat this procedure to enter stations in Preset Memories 3 through 6. You may then press the **Radio Button** to change bands and memorize up to 6 additional stations.
4. **To access a preset station**, press the desired **Preset Button** once (for odd number presets) or twice (for even number presets).
5. Press the **⏪) or ⏩) Button** to adjust the system volume.
6. Press the **EQ Button** to select and press the **+ or - Button** to set Treble, Bass, 3D Sound on/off and Left/Right Balance.
7. To turn off the unit, press the **⏸ Button**. An iPhone/iPod will continue charging while docked.

Using the iP90

Using the Line-in Jack

You can play any iPod without a docking port or other MP3 player or portable audio device through the iP90 via the Line-in Jack.

1. Plug one end of a standard audio patch cord (not included) into the headphone or line-out jack on your device and the other end of the patch cord into the iP90 Line-in Jack located on the back of the unit.
2. Press the **Radio Button** until "Line-in" appears in the lower part of the display.
3. Turn on and play your device.
4. Press the **⏪** or **⏩** to adjust the system volume. You may need to adjust the volume on your external device as well.
5. Press the **EQ Button** to select and press the **+** or **- Button** to set Treble, Bass, 3D Sound on/off and Left/Right Balance.
6. To turn off the unit, press the **⏻ Button**. Please remember to turn off your device, too.

Sleep Operation

Sleep mode lets you sleep to your iPhone/Pod or radio, gradually lowering the volume until the unit shuts off at the selected time.

1. Press the **Sleep Button** to enter sleep mode. The sleep time will show in the lower display.
2. Press the **Sleep Button** again as needed to adjust the sleep timer from 120, 90, 60, 30 or 15 minutes.
3. When the display changes back to show the real time, press the **Sleep Button** once to show the sleep time remaining. Pressing it again will change sleep time to next lowest increment.
4. iP90 has independent volume setting for sleep mode so you can adjust the sleeping volume without affecting the normal volume. The sleep volume will remain at that level the next time you enter sleep mode until controls are changed.
5. To stop listening at any time, press the **⏻ Button** to turn unit off.

Dimmer Operation

During normal operation, press the **Snooze/Dimmer Button** to control the brightness of the LCD display.

Using the iP90 in Other Countries

Different regions of the world use different FM radio frequency steps and ranges. You will need to select the one that matches the standards in your region (USA, UK, EUROPE, JAPAN, AUSTRALIA, or CHINA). The default setting is USA; if you live in the US, you may skip this section.

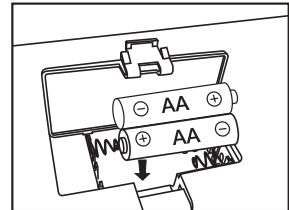
1. Make sure the iP90 is OFF (not playing in any mode). Press and hold the **Radio Button** for about 5 seconds until "Radio xxx" appears in the lower part of display. Press the **+** or **- Button** to set the "xxx" to your region.
2. Press the **Radio Button** again (or no button within 5 seconds) to exit the radio frequency setting mode.

Replacing iP90 Backup Batteries

Install/Replace Backup Battery

The iP90 uses a backup battery system to provide continuous alarm operation and clock settings in the event of a power failure. If the Battery Low Icon located on the right of the display is flashing, it is time to replace the backup batteries. Please make sure the AC adaptor is connected, otherwise all settings may be lost during battery replacement.

Open the battery compartment cover located on the bottom of the unit. Insert 2 "AA" batteries as indicated. We recommend the use of alkaline batteries for longer life.



Battery Warning

For models that require more than one battery

- Do not mix with used or other battery types/brands
- Do not heat above 75°C (167°F)
- Replace all batteries at the same time
- Do not expose contents to water
- Do not open batteries
- Do not charge or recharge
- Do not dispose of in fire
- Do not install backwards

IMPORTANT SAFETY INSTRUCTIONS

When used in the directed manner, this unit has been designed and manufactured to ensure your personal safety. However, improper use can result in potential electrical shock or fire hazards. Please read all safety and operating instructions carefully before installation and use, and keep these instructions handy for future reference. Take special note of all warnings listed in these instructions and on the unit.

1. **Water and Moisture** – The unit should not be used near water. For example: near a bathtub, washbowl, kitchen sink, laundry tub, swimming pool or in a wet basement.
2. **Ventilation** – The unit should be situated so that its location or position does not interfere with its proper ventilation. For example, it should not be situated on a bed, sofa, rug or similar surface that may block ventilation openings. Also, it should not be placed in a built-in installation, such as a bookcase or cabinet, which may impede the flow of air through the ventilation openings.
3. **Heat** – The unit should be situated away from heat sources such as radiators, heat registers, stoves or other appliances (including amplifiers) that produce heat.
4. **Power Sources** – The unit should be connected to a power supply only of the type described in the operating instructions or as marked on the appliance.
5. **Power-Cable Protection** – Power supply cables should be routed so that they are not likely to be walked on or pinched by items placed upon or against them. It is always best to have a clear area from where the cable exits the unit to where it is plugged into an AC socket.
6. **Cleaning** – The unit should be cleaned only as recommended. See the Maintenance section of this manual for cleaning instructions.
7. **Objects and Liquid Entry** – Care should be taken so that objects do not fall and liquids are not spilled into any openings or vents located on the product.
8. **Attachments** – Do not use attachments not recommended by the product manufacturer.
9. **Lightning and Power Surge Protection** – Unplug the unit from the wall socket and disconnect the antenna or cable system during a lightning storm or when it is left unattended and unused for long periods of time. This will prevent damage to the product due to lightning and power-line surges.
10. **Overloading** – Do not overload wall sockets, extension cords, or integral convenience receptacles as this can result in a risk of fire or electric shock.
11. **Damage Requiring Service** – The unit should be serviced by qualified service personnel when:
 - A. the power supply cable or plug has been damaged.
 - B. objects have fallen into or liquid has been spilled into the enclosure.
 - C. the unit has been exposed to rain.
 - D. the unit has been dropped or the enclosure damaged.
 - E. the unit exhibits a marked change in performance or does not operate normally.
12. **Antenna** – Do not connect an external antenna to the unit (other than that provided).
13. **Periods of Nonuse** – If the unit is to be left unused for an extended period of time, such as a month or longer, the power cable should be unplugged from the unit to prevent damage or corrosion.
14. **Servicing** – The user should not attempt to service the unit beyond those methods described in the user's operating instructions. Service methods not covered in the operating instructions should be referred to qualified service personnel.

Questions? Visit www.ihomeintl.com

Troubleshooting

Symptom	Possible Problem	Solution
iP90 does not turn on	AC adaptor isn't plugged into a working wall socket or not plugged into the power supply jack on back of the unit	Plug the AC adaptor into a working wall socket and plug the connector into the supply jack on the unit
iP90 doesn't respond	iP90 requires a reset	If unit is plugged in and doesn't respond, try resetting the unit by following these steps: a) remove iPhone/iPod from dock b) unplug unit from power source c) remove back up batteries d) wait a few minutes, then resume use
	iPhone/iPod is not docked properly	Remove your iPhone/iPod from the dock and check for obstruction on the connectors in the dock and on your iPhone/iPod. Then reseal it in the dock.
Battery Low icon always flashing	Batteries are weak	Replace with new batteries
	Batteries were not installed properly	Check to make sure the polarity (+ and – ends) matches the diagram in the battery compartment
iPhone/iPod does not respond to the unit/iPod is playing but no sound comes out	iPhone/iPod is not docked properly	Remove your iPhone/iPod from the dock and check for obstruction on the connectors in the dock and on your iPhone/iPod. Then reseal it in the dock.
	Your iPhone/iPod software is too old	Upgrade software on your iPhone/iPod via iTunes on your computer
	iPhone/iPod is locked up/plays but no sound comes out	Check the volume setting. Make sure your iPhone/iPod is working properly before docking into the unit. Please refer to your iPhone/iPod manual for details. See above for software upgrade information. You may need to reset your iPhone/iPod. Refer to your iPhone or iPod user guide for details on how to perform a reset.
	Using 1 st or 2 nd generation iPod, iPod Shuffle or other devices.	iP90 cannot control those iPod models or other devices.
iP90/iPhone/iPod performance is erratic	The iP90 is reacting to external interference	Move unit away from potential sources of external interference such as computers, modems, wireless devices (routers) or fluorescent light.
No sound from iP90	Volume is set too low on iP90	Make sure volume is turned up
iPhone/iPod didn't charge up	iPhone/iPod is not installed properly	Remove your iPhone/iPod from the dock and check for obstruction on the connectors in the dock and on your iPhone/iPod. Then reseal it in the dock.
	iPhone/iPod is locked up/ frozen	Please make sure your iPhone/iPod is working properly before docking into the unit. Please refer to your iPhone/iPod manual for details.
	iPhone/iPod battery has problem	
No AM band radio sound but others OK	AM loop antenna is not connected to the unit	Plug the AM loop antenna connector to the jack on the back of the unit
AM band radio is very noisy	AM loop antenna isn't located properly	Move the AM loop antenna away from the main unit AC adaptor and rotate it for best reception
Time sync didn't work	Older iPod models such as iPod mini do not support time sync function	Make sure you are using an iPhone or newer iPod such as touch, nano or classic. If not available, set time manually (see page 3).

Troubleshooting

Symptom	Possible Problem	Solution
Sound is distorted	Volume level is set too high	Decrease the volume
	Sound source is distorted	If the iPhone/iPod original sound source (MP3) is old or of poor quality, distortion and noise are easily noticed with high-power speakers. Try updating the file from a reputable source such as iTunes. If you are using an external sound source like older generation of iPod or iPod Shuffle, try reducing the output volume on the device itself. Also try turning bass boost OFF.
	EQ settings are too high. For example, if the treble is too high, the 3D effect may not sound as good	Lower EQ settings.
Unit/adaptor gets warm after extended play at high volume	This is normal	Turn unit off for awhile or lower volume
Snooze time is too long/short	Custom snooze time not set	Press and hold Snooze button then press + or - button to adjust
Alarm not working	AM/PM time/alarm time not set correctly	When setting clock or alarm time, take note of the AM/PM indicators
	Alarm time or source selected for alarm 2 , not alarm 1 or vice versa	Make sure to set the alarm time and source for the alarm icon 1 or 2 that is shown on the clock display
	7-5-2 days setting is not correct	7 days is every day alarm, 5 days is Mon-Fri, and 2 days is Sat-Sun. See page 3 for setting alarms.
	Calendar is not set correctly, which can affect 7/5/2 day alarm operation	See page 3 for setting Clock/Calendar Section.

