



Model: iW18

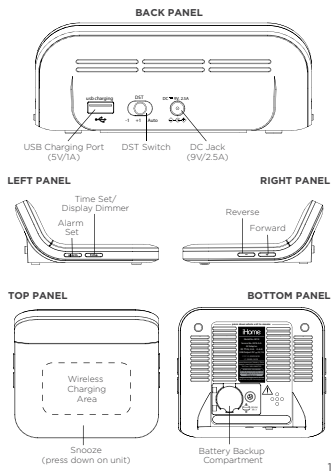
Bedside/Office Clock with Dual Charging



Quick Start Guide

QUESTIONS? visit www.ihome.com or call 1-800-288-2792

FEATURES & FUNCTIONS

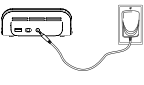


GETTING STARTED

Step One

Connecting the Unit

Before use, remove the battery pull tab from the bottom of the unit. Connect the included AC adapter to the DC jack located on the back of the unit and connect the other end to a working wall outlet.



Step Two

Setting Your Clock

- Press and hold the **Time Set Button** until the display flashes.
- Press the **= or + Buttons** to adjust selections and press **Time Set** to confirm.
- Do this for time, year, month and date.
- All done!



To toggle the clock display between 12/24 hour time, press the **Alarm Button** while the display is flashing during time setting.

Daylight Savings Time (DST) Switch:

By default, the DST Switch is set to Auto and will automatically adjust the time each March and November.

DISPLAY ICONS



To adjust the brightness of the display, press the **Time Set Button** repeatedly to cycle through brightness settings, including OFF.

WIRELESS CHARGING

- Supports:
 - Qi compatible phones (also works with plastic cases up to 3mm thick)
 - Solid **1** icon: Device is charging properly.
 - Rapid **blinking 1** icon: Device is not charging properly. Reposition device.
- Place Qi compatible device face up on the charging rest as pictured below:



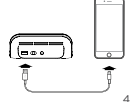
Check the lightning icon **1** on the iW18 display for charging status:

- Slow blinking 1 icon:** Device is charging properly.
 - Solid 1 icon:** Device is charged.
 - Rapid blinking 1 icon:** Device is not charging properly. Reposition device.
- Note: The lightning icon may continue to blink slowly when iOS devices are fully charged.

CAUTION: Remove metal protective or magnetic case from phone before charging. When charging phone, do not place magnetic-stripped or other metal objects on the charger. Doing so could damage the object or this unit. Qi compatible phones with metallic looking finishes will charge normally.

USB CHARGING

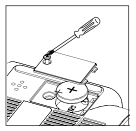
Connect the standard size end of a USB cable (not included) to the USB port on the back of the unit and connect the other end to the charging port on your device. (Make sure the unit is plugged into a working outlet in order to charge devices.)



BATTERY BACK-UP

The unit comes with a CR-2450 back-up battery installed to provide continuous alarm operation and clock settings in the event of a temporary power failure. Remove the battery pull tab before use. When the battery icon on the clock display is flashing, it is time to replace the backup battery. The battery compartment is located on the bottom of the unit.

- Make sure the AC adapter is connected, or you will lose your time and alarm settings during battery replacement.
- Use a Phillips screwdriver to open the battery compartment door.
- Remove the exhausted battery from the compartment and insert 1 CR-2450 battery, checking that the + side is facing up. Replace the compartment door. Do not overtighten.



WARNING: Lithium batteries can explode or cause burns if disassembled, shorted, recharged, exposed to water, fire, or high temperatures. Do not place loose batteries in a pocket, purse, or other container containing metal objects, mix with used or other battery types, or store with hazardous or combustible materials. Store in cool, dry, ventilated area. Follow applicable laws and regulations for transport and disposal.

- Do not ingest the battery. Chemical Burn Hazard. This product contains a coin/button cell battery. If the coin/button cell battery is swallowed, it can cause severe internal burns in just 2 hours and can lead to death.
- Keep new and used batteries away from children. If the battery compartment does not close securely, stop using the product and keep it away from children. If you think batteries might have been swallowed or placed inside any part of the body, seek immediate medical attention.
- Attention should be drawn to the environmental aspects of battery disposal.

IMPORTANT SAFETY INSTRUCTIONS

- When used in the directed manner, this unit has been designed and manufactured to ensure your personal safety. However, improper use can result in potential shock or hazards. Please read and follow all safety and operating instructions carefully before installation and use, and keep these instructions handy for future reference. Take special note of all warnings listed in these instructions and on the unit.
- Water and Moisture:** The unit should not be used near water. For example, near a bathtub, washroom, kitchen sink, laundry tubs, swimming pool or in a well basement.
 - Ventilation:** The unit should be situated so that its location or position does not interfere with its proper ventilation. For example, it should not be situated on a bed, sofa, rug or similar area where the cable extends into the unit to where it is plugged into an AC socket.
 - Power Sources:** The unit should be connected to a power supply only of the type described in the operating instructions or as marked on the appliance. Only use the AC adapter that came with the unit.
 - Objects and Liquid Entry:** Care should be taken so that objects do not fall and liquids are not spilled into any openings or vents located on the product.
 - Attachments:** Do not use attachments not recommended by the product manufacturer.
 - Lighting and Power Surge Protection:** Unplug the unit from the wall socket and disconnect the antenna or cable system during a lightning storm or when it is left unattended and unused for long periods of time. This will prevent damage to the product due to lightning and power-line surges.
 - Overheating:** Do not overload wall sockets, extension cords, or integral connections as this can result in a risk of fire or electric shock.
 - Damage Requiring Service:** The unit should be serviced by qualified service personnel when:
 - A power supply cable or plug has been damaged.
 - Objects have fallen into or liquid has been spilled into the enclosure.
 - The unit has been exposed to rain.
 - The unit has been dropped or the enclosure damaged.
 - The power switch or marker changes in performance or does not operate normally.
 - Periods of Non-use:** If the unit is to be left unused for an extended period of time, such as a month or longer, remove the batteries.
 - Servicing:** The user should not attempt to service the unit beyond those methods described in the user manual.
 - Magnetic Interference:** This product's speakers contain powerful magnets which could cause interference or damage to sensitive equipment such as hard drives, CRT televisions and monitors as well as medical, scientific and navigational devices. Keep this unit away from these products at all times.
 - Only use accessories/accessories specified by the manufacturer.** This product is suitable for use in tropical and/or moderate climates.
 - The unit should be serviced by qualified service personnel when the enclosure damaged or does not operate normally.**
 - Do not use flammable sprays,** such as lighter candles, should be placed on the apparatus.
 - WARNING:** To reduce the risk of fire or electric shock, do not expose the product to rain or moisture.
 - CAUTION:** Danger of explosion if battery is incorrectly replaced. Replace only with the same or equivalent type.
 - Do not dispose of batteries in the household trash or fire.**
 - The main plug of power adapter is used as the disconnect device.** It shall remain ready operate.

SETTING THE ALARM

Note: Each step must be completed while display is flashing or setting will time-out with any changes saved.

- Press and hold the **Alarm Button** for 2 seconds until the alarm time display and alarm icon flash.
- Press the **= or + Buttons** to adjust the alarm time to the desired time (hold for rapid setting). Make sure you set the correct AM/PM alarm time. The PM indicator appears to the left of the display.
- Press the **Alarm Button** to confirm the alarm time setting. The alarm schedule will flash: 7 (every day), 5 (weekdays) or 2 (weekend only).
- Press the **= or + Buttons** to select the desired alarm schedule.
- Press the **Alarm Button** to confirm the alarm schedule. 2 beeps will confirm alarm setting is complete. The alarm icon will remain on the display, indicating the alarm is armed.
- To turn off a sounding alarm and reset it to come on the next day at the same time, press the **Alarm Button** to reset alarm.

PREVIEWING THE ALARM

Press and release the desired **Alarm Button** as needed to preview the alarm and to toggle the alarm ON (indicated by the alarm icon) or OFF (no alarm icon).

PROGRAMMABLE SNOOZE

- To program Snooze, press down on the front of the unit for 2 seconds during normal operation (when no alarm is sounding).
- Press the **= or + Buttons** to select a snooze time (between 01 and 29 minutes).
- Press down and release the front of the unit to confirm setting. While the alarm is sounding, press down on the front of the unit to temporarily silence the alarm (3 minutes is the default). Snooze can be used several times during the one hour alarm cycle.



FCC INFORMATION

Model: iW18
FCC ID: 4A4918
IC: 9684-W18

This equipment should be installed and operated with minimum distance 20cm between the radiator & the user. This equipment complies with FCC RF radiation exposure limits set forth for an uncontrolled environment. This equipment complies with Industry Canada's radio frequency energy limits. Operation is subject to the following two conditions: (1) This device may not cause interference and (2) This device must accept any interference received which may cause undesired operation.

- Warning: Changes or modifications to this unit not expressly approved by the party responsible for compliance may void the user's authority to operate the equipment.
- NOTE: This equipment has been tested and found to comply with the limits for a Class B digital device, pursuant to Part 15 of the FCC Rules. These limits are designed to provide reasonable protection against harmful interference in a residential installation. This equipment generates, uses, and can radiate radio frequency energy and, if not installed and used in accordance with the instructions, may cause harmful interference to radio communications. However, there is no guarantee that interference will not occur in a particular installation. If the equipment does cause harmful interference to radio or television reception, which can be determined by turning the equipment off and on, the user is encouraged to correct the interference by one or more of the following measures:
 - Reorient or relocate the receiving antenna.
 - Increase the separation between the equipment and receiver.
 - Connect the equipment to a power outlet on a circuit different from that to which the receiver is connected.
 - Consult the dealer or a qualified technician for help.

IC Statement

This device complies with Part 15 of the FCC Rules. Operation is subject to the following two conditions: (1) This device may not cause interference, and (2) This device must accept any interference received, including interference that may cause undesired operation of the device.

L'Équipement doit être installé et utilisé avec une distance minimale de 20 cm entre le radiateur et l'utilisateur. Cet équipement est conforme aux limites d'exposition aux ondes radioélectriques (ORE) établies pour un environnement non contrôlé. L'opération est soumise aux conditions suivantes: (1) Cet appareil ne doit pas causer d'interférence et (2) Cet appareil doit accepter toute interférence radioélectrique reçue, même si elle provoque des perturbations indésirables. Si l'équipement cause des interférences nuisibles à la réception radio ou télévision, ce qui peut être déterminé en éteignant l'équipement et en le rallumant, l'utilisateur est encouragé à corriger l'interférence par l'une ou plusieurs des mesures suivantes:

- Reorienter ou relocaliser l'antenne réceptrice.
- Augmenter la distance entre l'équipement et le récepteur.
- Brancher l'équipement sur une prise de courant d'un circuit différent de celui auquel le récepteur est branché.
- Consulter le revendeur ou un technicien qualifié pour obtenir de l'aide.

WARRANTY

For product support information and warranty please visit: www.ihome.com/support